

EVENT BROCHURE EVENT BROCHURE EVENT BROCHURE EVENT BROCHURE EVENT BROCHURE



TOCA
Social



WELCOME TO TOCA SOCIAL, THE WORLD'S FIRST INTERACTIVE FOOTBALL AND DINING EXPERIENCE.

Play, dine and score this summer, by hosting a one-of-a-kind corporate event, all under the iconic dome of The O2.
Build a game-winning package that fits your needs or let our legendary events team guide you through your journey.
So have a browse, dig out your shooting boots and dream big!

WHAT MAKES TOCA SOCIAL UNIQUE?



THE VENUE

Unforgettable events need iconic locations, which is why you will find TOCA Social at the world-famous The O2 in London. Our own theatre of football can hold a 400 strong squad. Split over two floors, the Main Floor and the Players' Lounge, are flexible spaces that can be adapted to provide a more intimate and private event - which will hopefully keep the press at bay after you score a last-minute worldy.

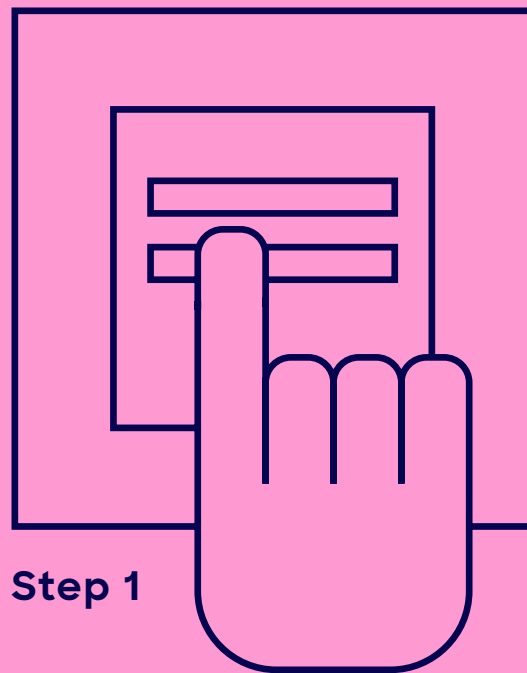
From meetings to product launches and post-work margaritas, TOCA Social is ready to give your next event a spectacular home and make it one to remember.

UP TO
400 GUESTS
EXCLUSIVE USE



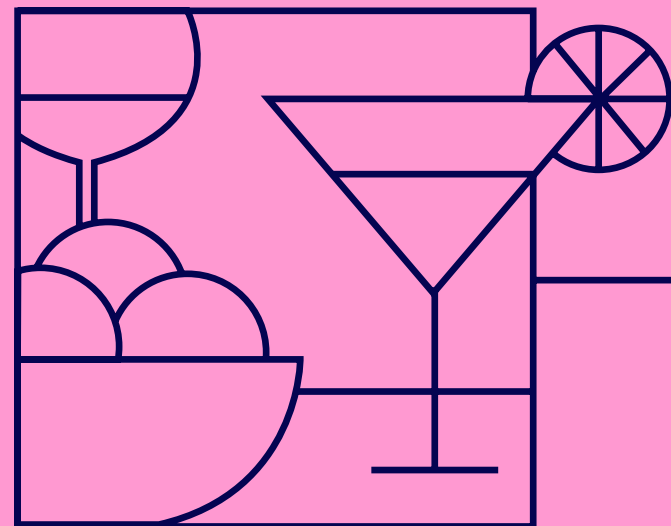
BUILD YOUR GAME-WINNING EVENT IN 4 SIMPLE STEPS

**RESERVE
YOUR BOXES**



Step 1

**ADD A FOOD &
DRINKS PACKAGE**



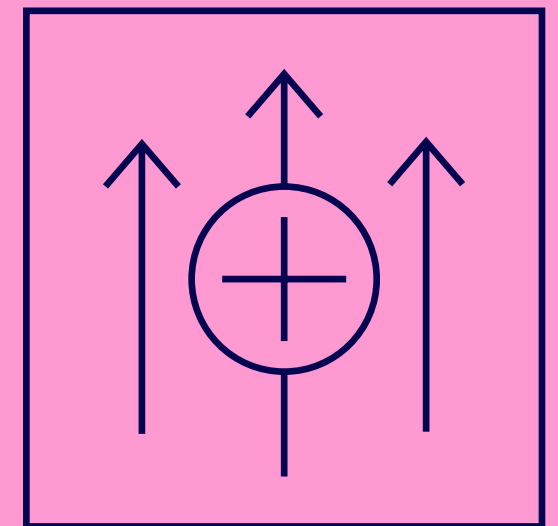
Step 2

**CHOOSE YOUR
EVENTS SPACE**



Step 3

**ENHANCE
YOUR EVENT**



Step 4

Step 1

RESERVE YOUR BOXES

The box is where all the best goalmouth action takes place. Accommodating up to 12 people, our Boxes are great for workshops and after-work socials. Soak up the atmosphere and take a seat in our comfy seating area, as our team serve up outstanding food and drink. Whether you're a box-to-box midfielder or a total beginner, our level playing field means that David or Diana can slay Goliath.

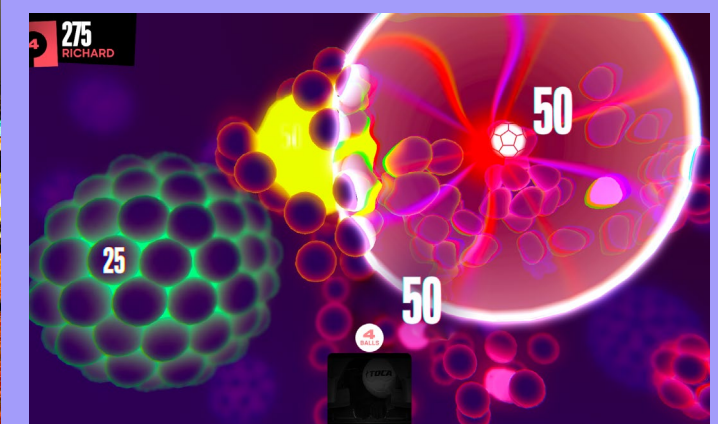
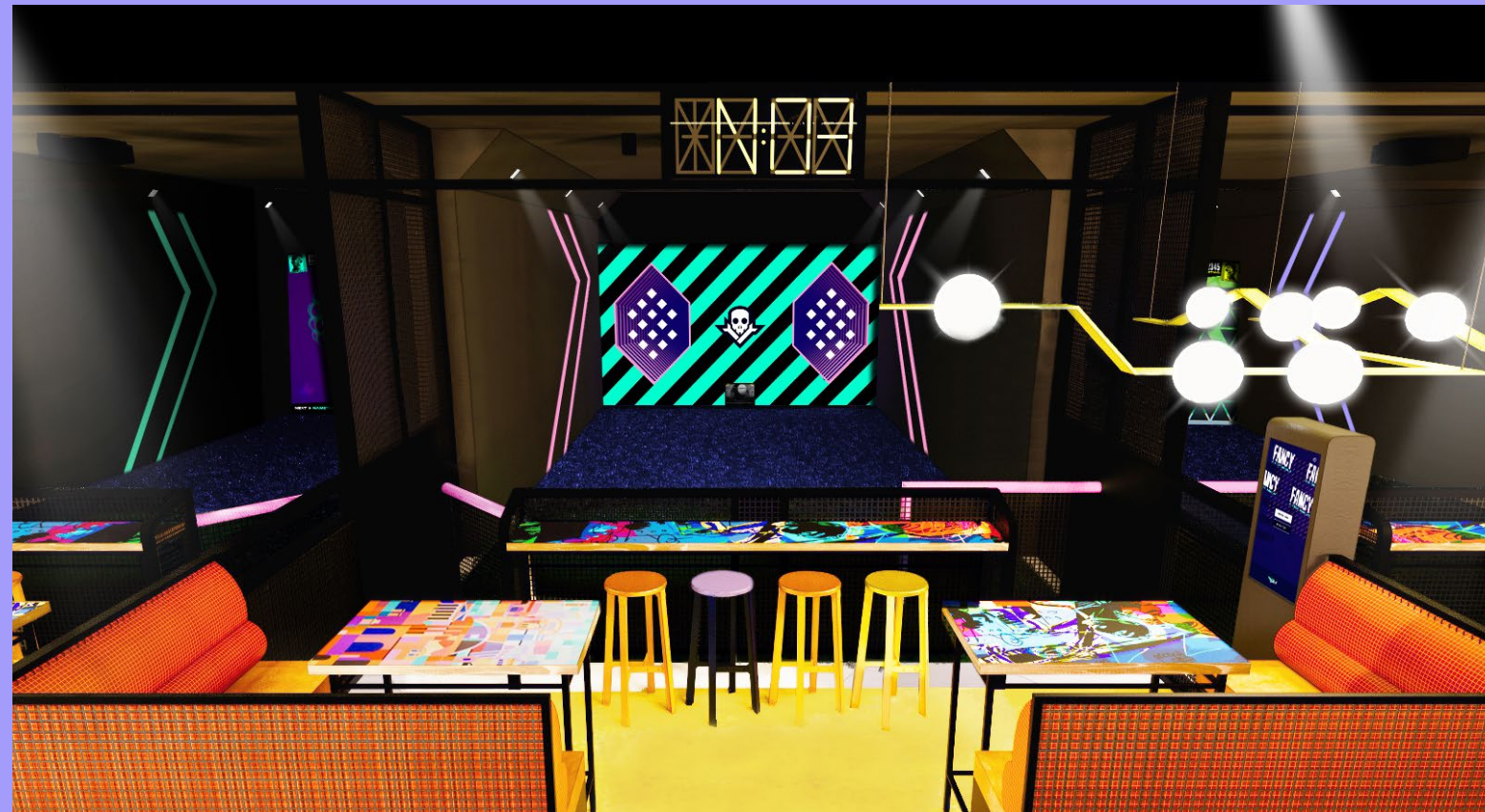
We believe in creating moments to be shared, so keep your eyes peeled for the TOCA Social camera and grab your team photo and in-play action shots to cement yourself as king or queen of the Whatsapp group.

UP TO
12 GUESTS
PER BOX

PRICE:

Off Peak £50 per hour
Monday - Friday 9am-4pm

Peak £80 per hour
Monday - Friday after 4pm
and all weekend
(minimum of 2x hours
game time)



Step 2

ADD A FOOD & DRINKS PACKAGE



5 a SIDE - £18pp

2x SMALL PLATES

1x SIDE per person

6 a SIDE - £22pp

1x SIDE per person

1x SMALL PLATE

1x LARGE PLATE

1x DRINK per person

11 a SIDE - £45pp

1x SIDE per person

1x SMALL PLATE

1x LARGE PLATE

1x DESSERT TOKEN

2x DRINKS per person

'Menu attached separately'

Step 3

CHOOSE YOUR PRIVATE EVENTS AREA

VENUE CAPACITY

EXCLUSIVE HIRE **400** total

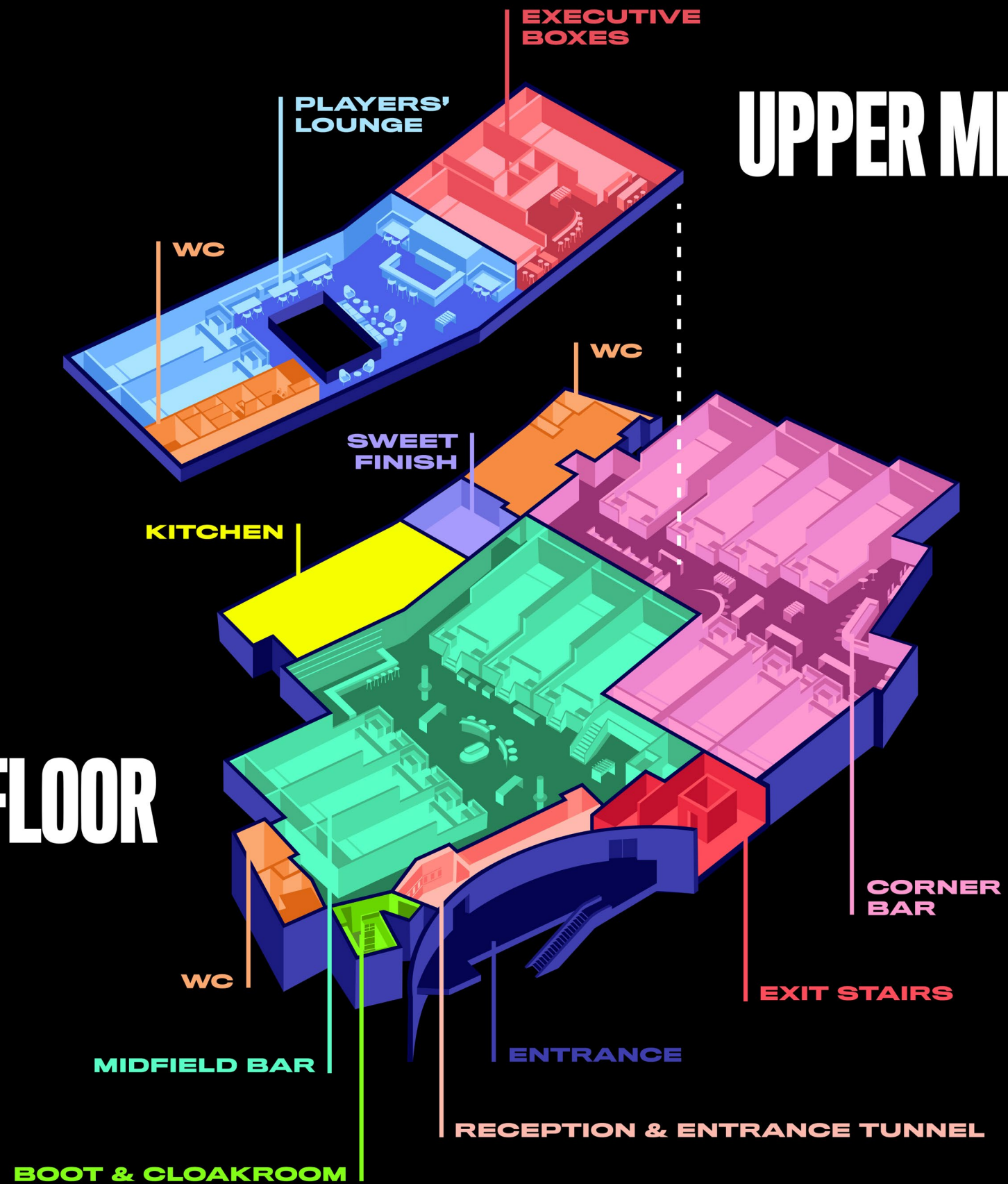
CORNER BAR **170**

PLAYERS' LOUNGE **100**

EXECUTIVE BOXES **30**

MAIN FLOOR

UPPER MEZZANINE



Step 4

EXCLUSIVE VENUE HIRE

INCLUSIONS

- **PRIVATE HIRE OF THE ENTIRE VENUE INCLUDING THE PLAYERS' LOUNGE, CORNER BAR AND OUR EXECUTIVE BOXES**
- **17 TOCA BOXES WITH UNLIMITED GAME TIME**
- **TOCA EVENT MANAGER TO PLAN YOUR EXCLUSIVE EVENT**
- **PLAYMAKER TO CATER TO YOUR EVENT NEEDS**
- **BESPOKE VENUE THEMING**
- **TOCA DJ**

Prices Available On Request. Please Speak To Our Toca Event Managers For A Bespoke Quote.



CORNER BAR

Got a lot of friends that you just can't miss off the guest list? TOCA Social has got you covered. Our Corner Bar event space offers an ideal location for your next private event for up to 170 people. With seven Boxes for playing our high tech immersive games, a large networking and interactive space complete with foosball tables and vintage arcade games and not to mention your very own exclusive Bar and WC's, what more could you need to offer your guests the VIP TOCA treatment?

UP TO
170 GUESTS



PLAYERS' LOUNGE

Book the Players' Lounge for yourself, a purpose-built space that's ideal for playing host to unforgettable private events. Perfect for team socials, seasonal celebrations and away days, the Players' Lounge overlooks the main venue, so you can soak up the atmosphere from your very own exclusive floor. With four Boxes to experience all the action, your own exclusive bar and a dedicated set of WC's, your guests will feel like football royalty as they battle out to be crowned MVP.

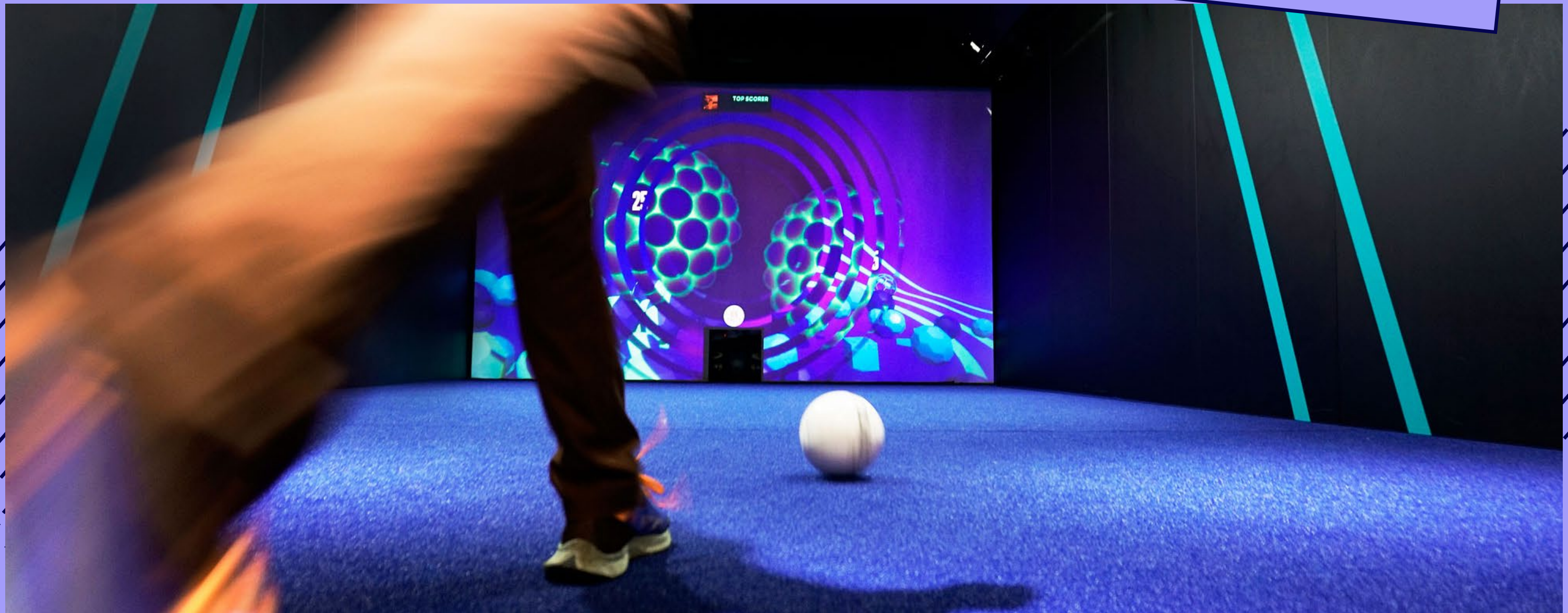
UP TO
100 GUESTS



EXECUTIVE BOXES

Looking for your own private space but still want to be in touching distance of the action? TOCA Social has got you covered. In our Executive Boxes you will find two private Boxes which allow for plenty of networking in between trading volleys on the pitch. Located on the Upper Mezzanine level of the venue, this space is perfect for you and your guests to experience TOCA Social in an intimate but buzzing environment.

UP TO
30 GUESTS
EXCLUSIVE USE



SOCIAL SOCIAL SOCIAL SOCIAL SOCIAL ENHANCERS ENHANCERS ENHANCERS ENHANCERS ENHANCERS ENHANCERS

FEELING FANCY AND WANT TO BE A LITTLE BIT EXTRA, GO BOLD OR GO HOME RIGHT?

- ADDITIONAL TOCA GAME TIME
- PERSONALISED TOCA FOOTBALL SHIRTS
- TOCA BRANDED INVITES - PDF VERSION
- COMPANY BRANDED MENUS
- TOCA TROPHY FOR YOUR OVERALL WINNER
- TOCA MEDALS FOR EVERYONE
- PERSONALISE YOUR BOX WITH WHATEVER YOU FANCY.
PICTURES, NAMES, EVEN YOUR FAVOURITE FOOTBALL TEAM.
- TOCA GOODIE BAG

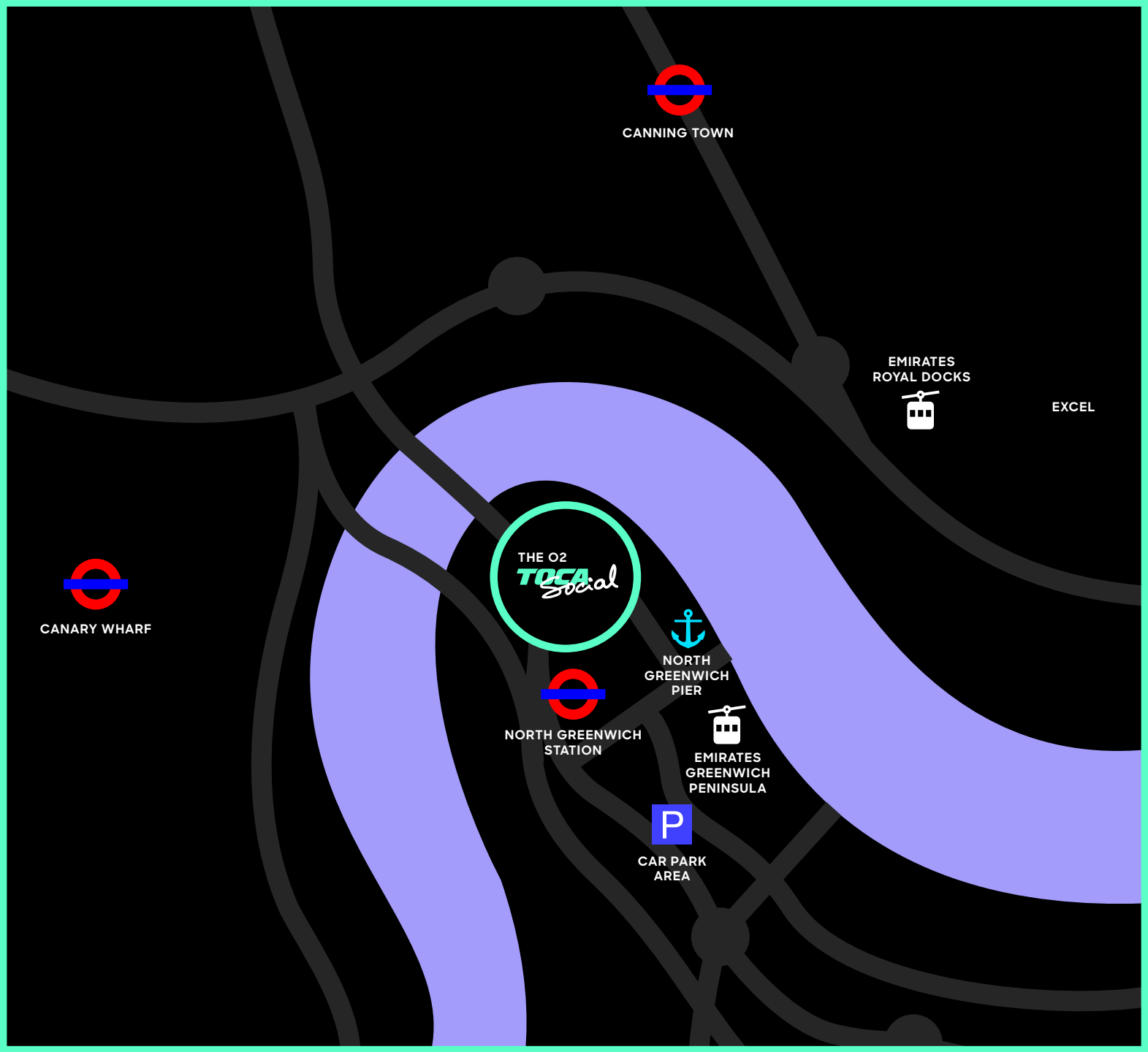


EXCLUSIVE USE ONLY:

For those of you aiming high and hiring the entire venue, you may as well take a peek at these add-ons too.. Go bold or go home right?

- BESPOKE VENUE THEMING
- TOCA DJ

LOCATION



NORTH GREENWICH (JUBILEE LINE)

From Canary Wharf (1 Stop), London Bridge (4 Stops)



EMIRATES GREENWICH PENINSULA

From the Royal Docks and the Excel Centre (5 minute walk from the O2)



NORTH GREENWICH PIER

Every 20 minutes from London Bridge, Tower, Embankment, Westminster and London Eye



NORTH GREENWICH STATION (BUS)

108, 129, 132, 161, 188, 422, 472 or 486



CAR PARK

Use car parks 2, 3 or 4. 2,000+ spaces, £9 for 2-4 hours



WE ARE ALSO VERY CLOSE TO LONDON CITY AIRPORT, IF YOU FANCY FLYING IN...

KS THANKS THANKS THANKS THANKS
THANKS THANKS THANKS THANKS TH

TOCA *Social*

ARE YOU GAME?